



Oakleigh

Oakleigh is a diverse multi cultural suburb steeped in history. Oakleigh is the oldest area within the City of Monash with its development dating from the 1840s when a grazing run was established by John McMillan in the Scotchmans Creek area. By 1861 there were 15 brick or stone houses, 167 wooden houses, 8 tents and 25 slab, bark or mud huts and a population of 1,108. In 1879 a pivotal event occurred in the area's development - the Oakleigh to Melbourne rail line was opened which led to a boom in the area.

Today Oakleigh still possesses a unique mix bringing the best of many cultures to the area. Take a walk through the streets of Oakleigh and you will find many restaurants and food stores offering a varied cuisine, from Greek, Asian, Italian, Lebanese to the local Aussie milk bar.

Much of the suburb is made up of spacious residential streets providing charming period homes on generous allotments with a smattering of light industry, and its large central district has a surprising vibrant, inner-city feel to it. The pedestrian friendly Eaton Mall links its three parallel main streets – Portman Street, Chester Street, and Atherton Road – and all are lined with cute 1920's buildings housing sundry shops and eateries. If Oakleigh's centre doesn't have what you want, you can always scoot down the road to Chadstone, Melbourne's biggest shopping centre, just 1.5km away.

Perhaps Oakleigh's main attraction is its space. There's enough to provide for seven world class golf courses – including the renowned Huntingdale and Metropolitan – with plenty left over.

Fast Fact: Oakleigh is home to Victoria's first ever motel. Affectionately known as 'The Oak', the retro 1950's building has a heritage listing.

Locals recommend:

Cafes & Restaurants

Nikos Quality Cakes (25 Portman St.)
The famous Nikos offers mountains of delectable treats and delicious coffee.

Ellinis Greek Taverna (66 Portman St.)
Authentic Greek fare, including fantastic bread and dips.

Shopping

Oakleigh Market (12-16 Chester St.)
Fresh produce from Wednesdays to Sundays.

Oakleigh Fresh Pasta (53 Atherton Rd.)
Lika mama used to make.

Chadstone Shopping Centre If you can't get it at 'Chaddie', you must have got the name wrong.

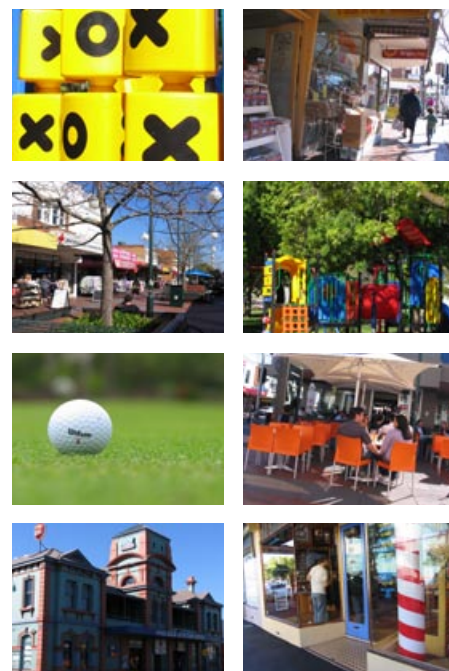
Bars & Hotels

Foresters Arms (1529 Dandenong Rd.)
A cosy pub behind a colourful 1920s façade.

Oakleigh Junction Hotel (1 Portman St.)
Old-fashioned drinking hole, just the way we like 'em.

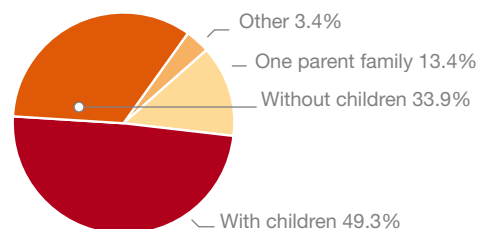
Leighoak Hotel (1555 Dandenong Rd.)
A friendly, family-oriented bistro.

Gallery

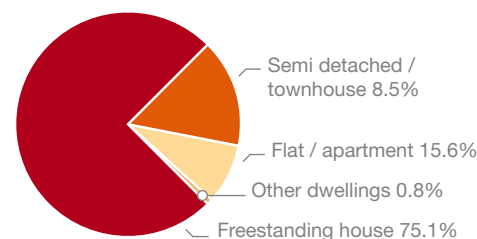


Statistics:

Family structure



Type of dwelling



Statistic does not include Oakleigh South.

Family structure and Type of Dwelling data used with permission of the Australian Bureau of Statistics.

hockingstuart

hockingstuart.com.au