



## Northcote

The inner-northern suburb of Northcote is located seven kilometres from Melbourne's CBD, in the local government area of the City of Darebin. It's the suburb's proximity to the CBD and access to the abundant retail and gastronomic delights of High Street that make Northcote so desirable.

Recognised for the breadth of its alternative and multicultural lifestyle, Northcote offers a different culture to its inner suburban rivals. It has been identified as a major activity centre with potential to expand, and plans have been put in motion to allow for further development of the area.

The influx of trendy cafes and historical working-class establishments have led to Northcote solidifying a name for itself as an intriguingly eclectic suburban location. With generous parklands, such as

Johnson Park, and access to any number of shopping opportunities, Northcote is ideal for people seeking a bit of balance in their life.

**Fun fact:** More than 40 per cent of residents in the Darebin community can speak a language other than English.

## Locals recommend:

### Cafes & Restaurants

**Alphabet Bar and Cafe** (100 High St. 9482 3833) Bold colours, friendly staff & a great menu.

**Cafe Kebab** (King 348 High St. 9486 3800) Something for lovers of the lamb sandwich.

**Curry Cafe** (73 High St. 9489 9066) Delights to set your taste buds ablaze.

**Goodlife Cafe** (180 Victoria Rd. 9489 2885) The healthy alternative for cafe aficionados

### Shopping

**Blooms on Earth** (108 High St. 9489 1788) A range of flowers for all occasions.

**Subterranean Vintage & Retro Clothing** (277 High St. 9481 8100) Clothing alternatives for the daring.

**Parachute** (261 High St. 9481 1672) Stylish homeware, gifts and furnishings.

### Bars & Hotels

**Northcote Social Club** (301 High St. 9489 3917) A Northcote institution for live music, the late license and extensive beer garden makes this place a must for concerted revellers.

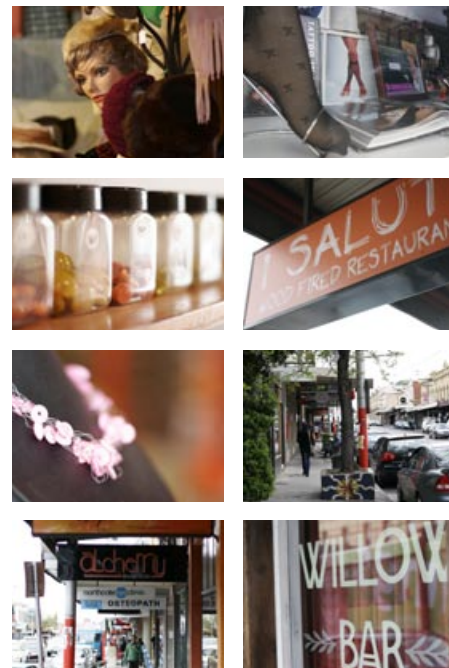
**Kelvin Bar** (84 High St. 9482 6600) This is Northcote personified – quirky 70's decor and a laid-back atmosphere.

**Wesley Anne** (250 High St. 9482 1333) Unique medieval-style music venue with great food and wine list to boot.

**The Salty Dog** (300 High St. 9486 5551) An eclectic venue with odd nooks and an old-English feel.

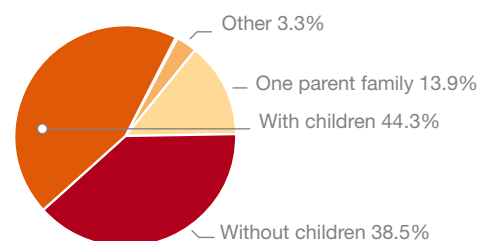
**Traffic** (85 High St. 9403 3222) A cafe and bar with cool tunes and alfresco options.

## Gallery

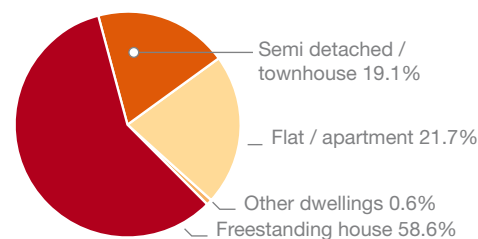


## Statistics:

### Family structure



### Type of dwelling



Family structure and Type of Dwelling data used with permission of the Australian Bureau of Statistics.

**hockingstuart**

hockingstuart.com.au